



SIGNATURE HOMES
— RESIDENTIAL LEASING —



🏠 63 Deep Water Bay Road

63 Deep Water Bay Road, Deep Water Bay, Island South, Hong Kong

Meticulously designed and constructed to an exceptionally high standard, these deluxe three-storey houses come with private terraces and roof tops, connecting to green and calm environment.

- ◆ Surrounded by greenery and tranquility, immersing in the natural environment and fresh air
 - ◆ The area features undulating views of Hong Kong Golf Club and the South China Sea
- ◆ Located in prestigious and serene setting of Deep Water Bay yet with easy access to recreational offerings at Repulse Bay and Stanley

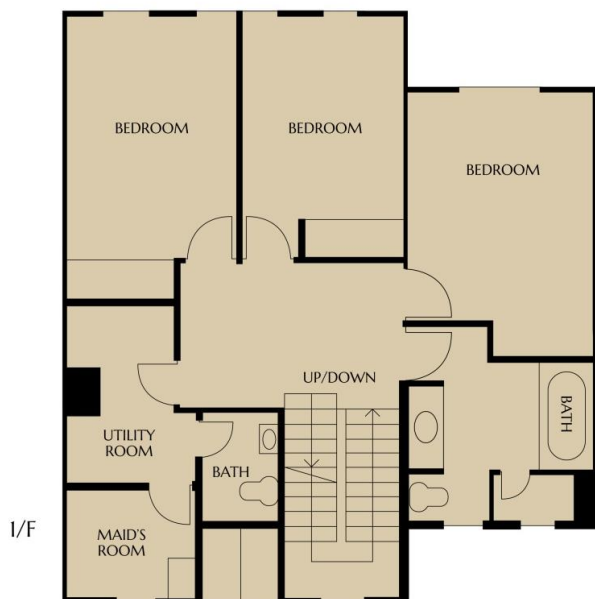
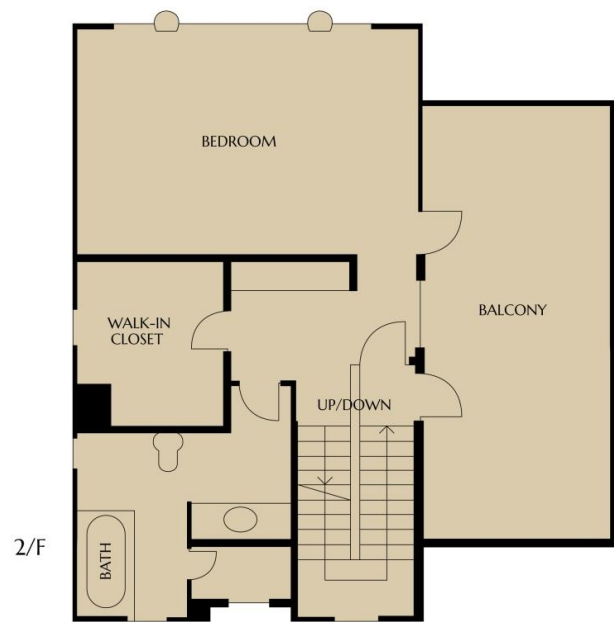


FEATURES

- ◆ Family-friendly community with high security and privacy
- ◆ Comprehensive clubhouse provides heated outdoor swimming pool, well-equipped gymnasium, squash court, landscaped gardens, children's playground and multi-purpose function hall
- ◆ Two covered parking spaces included



FLOOR PLAN



Gross Area: 3,362 sf. – 3,479 sf.
 Saleable Area: 2,727 sf. – 2,838 sf.



Leasing & other Enquiries :
 +852 2828 7728 / +852 9228 2931 (Mobile / WhatsApp / WeChat)

signaturehomeshk | SignatureHomes_HK | www.signaturehomes.com.hk

The particulars, photos, perspectives, design, finishes and materials, layout size of any part(s) in the brochure are for reference only. No representation made or responsibility accepted for the accuracy of the whole or any part(s). All plans and finishes contained are subject to alterations without prior notice. Please contact us for more information. Licence No. C-073185

